



BCI Group GC2 LIFEP04 BATTERY PACK

FEATURES Lithium Iron Phosphate (LiFePO4):the Safest Lithium Technology.
Integrated Smart Battery Management System(BMS).
Bluetooth
SOC LED Indicator.

PERFORMANCE Long Cycle Life>4000cycles @100% DOD.
High Density, High Discharge Current, High Temperature Range.
Low Weight, Free Maintenance.
Fast Charging.
Environment Friendly.



LFP51.2-36(51.2V36Ah)

BATTERY DATA SHEET

Electrical Parameters

| | |
|-----------------|-----------------------------|
| Nominal Voltage | 51.2V |
| Rated Capacity | 36Ah |
| Energy | 1843.2Wh |
| Resistance | ≤30m Ω |
| Efficiency | 99% |
| Cycle Life | > 4000cycles @0.5C,100% DOD |
| Self Discharge | 2% per Month |

Mechanical Parameters

| | |
|----------------------|--|
| Dimension(L x W x H) | 260 x 181 x 273 mm 10.2 x 7.1 x 10.7" |
| Weight | 13kg(28.6lbs) |
| Terminal Type | M8 |
| Battery Housing | ABS, UL-94 V-0 |
| Housing Protection | IP67 |
| Cell Type-Chemistry | LiFePO4 Battery Cell |

Discharge Parameters

| | | | | | |
|-------------------------------|-------------------|------|------|------|-------|
| Continuous Discharge Current | 36A | | | | |
| Pulse Discharge Current | 108A(< 3 seconds) | | | | |
| Recommended Volt. Disconnect | 40V | | | | |
| BMS Discharge Cut-off Voltage | 32V | | | | |
| Reconnect Voltage | 36.8V | | | | |
| Short Circuit Protection | 200~600 us | | | | |
| Minutes of Discharge | @25A | @56A | @75A | @85A | @100A |
| | 72 | 32 | 24 | 21 | 18 |

Charge Parameters

| | |
|----------------------------|-------------------------|
| Charge Method | CC-CV |
| Charge Voltage | 57.6~59.2V |
| Recommended Float Voltage | 55.2V |
| Recommended Charge Current | 18A |
| Maximum Charge Current | 36A |
| BMS Charge Cut-off Voltage | 62.4V |
| COLD CHARGING | Integrated self-heating |

Compliance Certificate

| | |
|-------------------------|------------------------|
| Certifications | UL1642(cell) |
| | CE/KC/BIS |
| | IEC62133 & CB |
| Shipping Classification | UN3480, Class 9,UN38.3 |

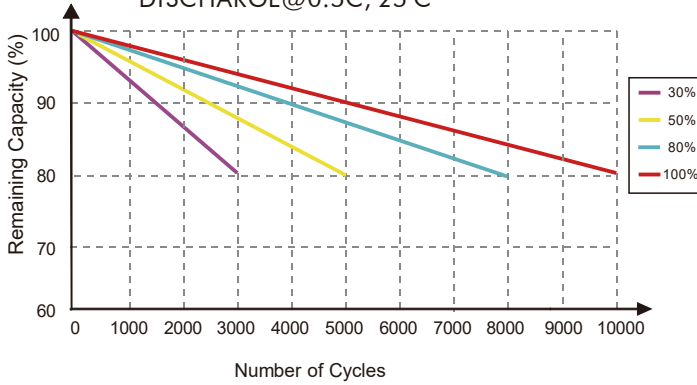
Temperature Parameters

| | |
|------------------------------|---------------------------|
| Discharge Temperature | -20 to 60°C (-4 to 140°F) |
| Charge Temperature | 0 to 45°C (32 to 113°F) |
| Storage Temperature | 0 to 60°C (32 to 140°F) |
| BMS High Temperature Cut-off | 80°C(176°F) |

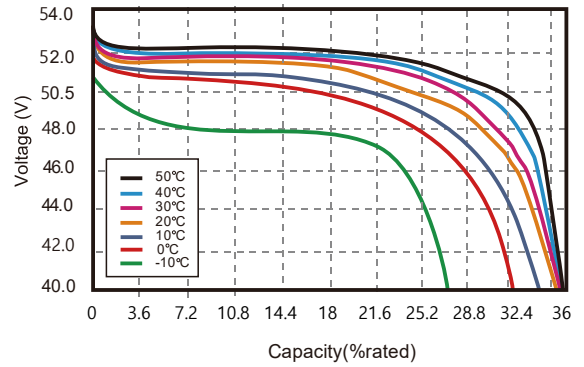


Performance Characteristics

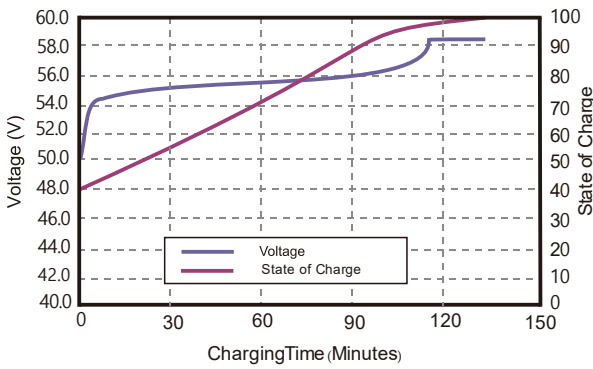
CYCLE LIFE vs. DEPTH OF DISCHARGE(DOD)
DISCHARGE @ 0.5C, 25°C



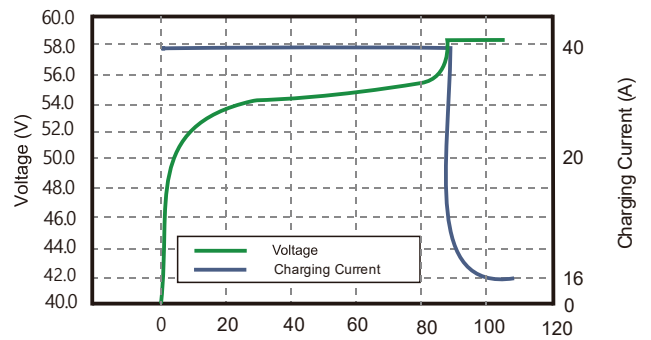
DISCHARGE CAPACITY at VARIOUS TEMPERATURES
DISCHARGE @ 0.5C



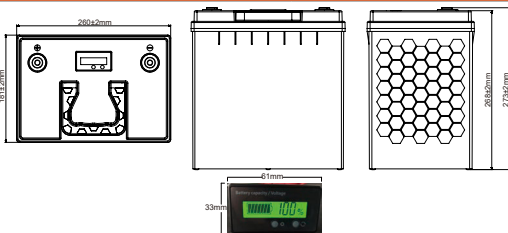
STATE OF CHARGE CURVE @ 0.5C, 25°C



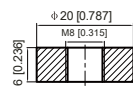
CHARGING CHARACTERISTICS @ 0.5C, 25°C



Battery Dimension



M8 - 1.0x 8mm
Threaded Hole



Battery Applications

- + Data Center UPS
- + Military Power Supply
- + Aerial Work Platform
- + Floor Cleaning Machines
- + Power Tools, Lawn Mower
- + Electric Mobilities (E-scooters, Wheelchair)
- + Golf Carts
- + Medical Devices
- + Passenger Vehicles

Battery Recycle



NOTE: Do Not Mix With Sealed Lead Acid Batteries When Recycling.
See E Group User's Manual for Proper Operation.
© 2021, E Group Inc. All Rights Reserved.

