



BCI Group GC2 LIFEP04 BATTERY PACK

FEATURES Lithium Iron Phosphate (LiFePO4):the Safest Lithium Technology.
Integrated Smart Battery Management System(BMS).
Bluetooth
SOC LED Indicator.

PERFORMANCE Long Cycle Life>4000cycles @100% DOD.
High Density, High Discharge Current, High Temperature Range.
Low Weight, Free Maintenance.
Fast Charging.
Environment Friendly.



LFP51.2-30(51.2V30Ah)

BATTERY DATA SHEET

Electrical Parameters

Nominal Voltage	51.2V
Rated Capacity	30Ah
Energy	1536Wh
Resistance	≤30m Ω
Efficiency	99%
Cycle Life	> 4000cycles @0.5C,100% DOD
Self Discharge	2% per Month

Mechanical Parameters

Dimension(L x W x H)	260 x 181 x 273 mm 10.2 x 7.1 x 10.7"
Weight	12.5kg(27.5lbs)
Terminal Type	M8
Battery Housing	ABS, UL-94 V-0
Housing Protection	IP67
Cell Type-Chemistry	LiFePO4 Battery Cell

Discharge Parameters

Continuous Discharge Current	30A				
Pulse Discharge Current	90A(< 3 seconds)				
Recommended Volt. Disconnect	40V				
BMS Discharge Cut-off Voltage	32V				
Reconnect Voltage	36.8V				
Short Circuit Protection	200~600 us				
Minutes of Discharge	@25A	@56A	@75A	@85A	@100A
	72	32	24	21	18

Charge Parameters

Charge Method	CC-CV
Charge Voltage	57.6~59.2V
Recommended Float Voltage	55.2V
Recommended Charge Current	15A
Maximum Charge Current	30A
BMS Charge Cut-off Voltage	62.4V
COLD CHARGING	Integrated self-heating

Compliance Certificate

Certifications	UL1642(cell)
	CE/KC/BIS
	IEC62133 & CB
Shipping Classification	UN3480, Class 9,UN38.3

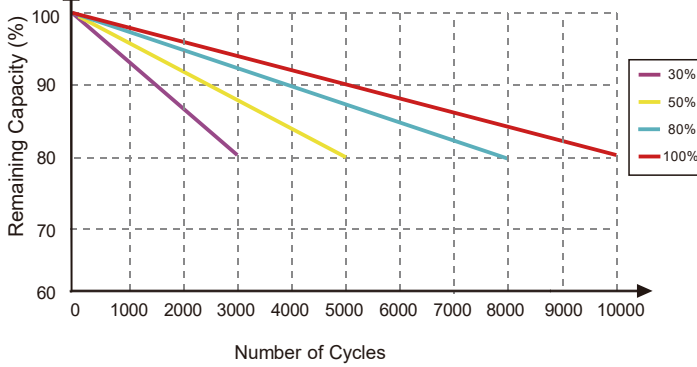
Temperature Parameters

Discharge Temperature	-20 to 60°C (-4 to 140°F)
Charge Temperature	0 to 45°C (32 to 113°F)
Storage Temperature	0 to 60°C (32 to 140°F)
BMS High Temperature Cut-off	80°C(176°F)

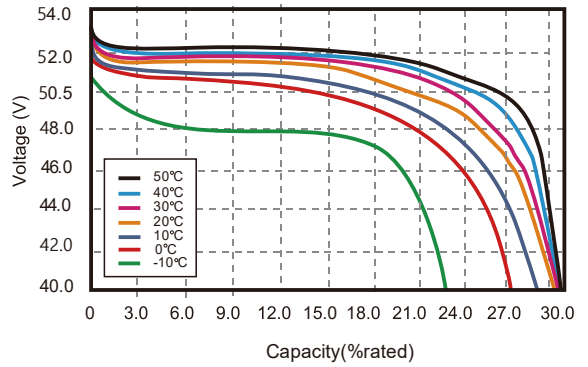


Performance Characteristics

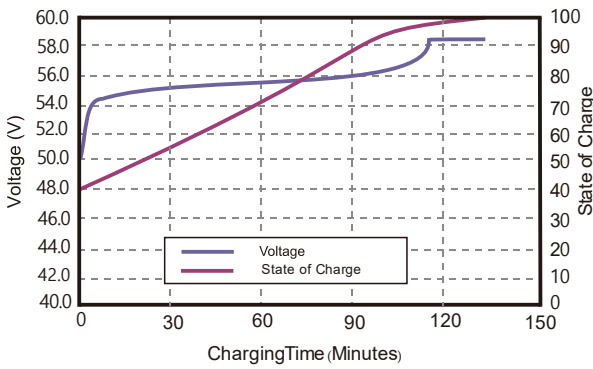
CYCLE LIFE vs. DEPTH OF DISCHARGE(DOD)
DISCHARGE @ 0.5C, 25°C



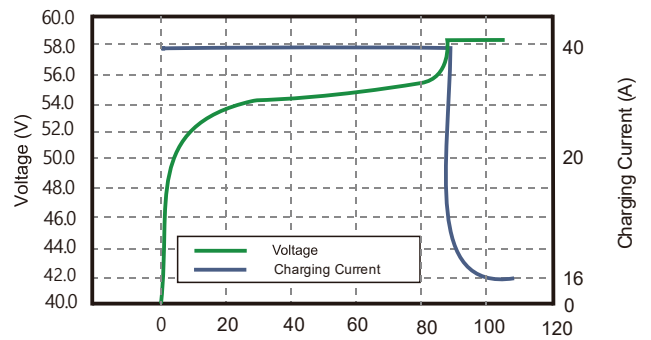
DISCHARGE CAPACITY at VARIOUS TEMPERATURES
DISCHARGE @ 0.5C



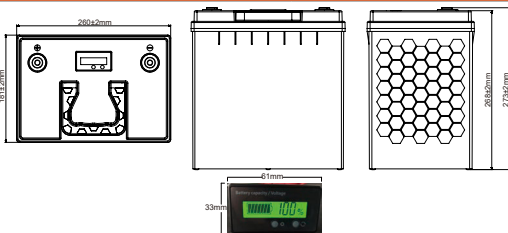
STATE OF CHARGE CURVE @ 0.5C, 25°C



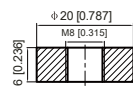
CHARGING CHARACTERISTICS @ 0.5C, 25°C



Battery Dimension



M8 - 1.0x 8mm
Threaded Hole



Battery Applications

- + Data Center UPS
- + Military Power Supply
- + Aerial Work Platform
- + Floor Cleaning Machines
- + Power Tools, Lawn Mower
- + Electric Mobilities (E-scooters, Wheelchair)
- + Golf Carts
- + Medical Devices
- + Passenger Vehicles

Battery Recycle



NOTE: Do Not Mix With Sealed Lead Acid Batteries When Recycling.
See E Group User's Manual for Proper Operation.
© 2021, E Group Inc. All Rights Reserved.

